



BB STEEL INTERNATIONAL

“IWAKO” SIGHT GLASS LEVEL GAUGE CATALOGUE



“IWAKO” SIGHT GLASS LEVEL GAUGE

The Sight Glass Level Gauge provides direct visual indication of liquid levels in tanks and pipeline systems. It enables accurate and real-time monitoring, improving operational control and safety. Ideal for industrial applications requiring reliable and precise level measurement.

Sight Glass Level Gauge Applications

- Storage Tank / Process Tank
- Chemical / Petrochemical
- Boiler / Hot Water System
- Food & Beverage
- Water / Wastewater Treatment
- Process Industry

“IWAKO” SIGHT GLASS LEVEL GAUGE CATALOG



Disc Sight Glass (Round Sight Glass)

The Disc Sight Glass is designed for direct visual inspection inside tanks or vessels. Made from high-quality borosilicate glass, it offers excellent resistance to heat and chemicals, ensuring safe and clear observation of internal processes.

Key Features

- Borosilicate glass with high thermal and chemical resistance
- Clear visibility for safe process monitoring
- Strong construction for pressure applications
- Suitable for tank wall or cover installation
- Custom sizes available upon request



Circular Sight Glass (Sight Glass Flange)

The Circular Sight Glass is a flanged-type viewing window designed for installation on tanks and vessels. It provides secure sealing and reliable performance under industrial operating conditions.

Key Features

- Flanged design for secure and leak-tight installation
- High-strength borosilicate glass
- Suitable for pressure vessels and industrial tanks
- Provides clear and direct visual inspection
- Custom fabrication available

“IWAKO” SIGHT GLASS LEVEL GAUGE CATALOG

Tube Sight Glass Mat. Borosilicate

The Gauge Glass Tube is available in both clear type and red line type, manufactured from borosilicate glass for direct liquid level indication. The clear type allows direct observation of the actual liquid condition, while the red line type improves level visibility for easier reading. It is ideal for applications requiring accurate and safe level monitoring.

Key Features

- Clear type for direct observation of actual liquid condition
- Suitable for general service and liquid color/clarity inspection
- Red line type enhances liquid level visibility for easier reading
- Easy to read even in low-light areas or from a distance
- Made from borosilicate glass for heat and chemical resistance
- Easy installation for various tank and level gauge systems



Stainless Steel Gauge Cock with Tube Sight Glass

The Stainless Steel Gauge Cock with Tube Sight Glass is designed for direct visual liquid level indication in tanks. The glass tube is connected to stainless steel valves at the top and bottom, providing clear level monitoring together with safe shut-off control. Its durable construction makes it suitable for industrial applications requiring strength and corrosion resistance.

Key Features

- Stainless steel gauge cocks for high strength and corrosion resistance
- Clear and continuous direct visual indication
- Safe operation with shut-off control
- Easy installation and suitable for industrial tanks and systems
- Custom-made design available upon request



Brass Gauge Cock with Tube Sight Glass

The Brass Gauge Cock with Tube Sight Glass is a direct-reading liquid level indicator for tanks. It combines a glass tube with brass valves at the top and bottom, allowing operators to monitor liquid level visually while controlling shut-off safely and conveniently. It is a practical and economical solution for water systems and general industrial applications.

Key Features

- Cost-effective design
- Brass gauge cocks with good corrosion resistance for general water service
- Continuous direct visual level indication
- Allows opening and closing control for safer operation
- Simple construction, easy installation, and convenient maintenance
- Custom-made design available upon request



“IWAKO” SIGHT GLASS LEVEL GAUGE CATALOG



REFLEX / TRANSPARENT SIGHT GLASS

The Reflex / Transparent Sight Glass is designed for direct liquid level indication in tanks under high-pressure and high-temperature conditions. The reflex type provides clear level reading without the need for external lighting, while the transparent type allows observation of the actual liquid condition. It is widely used in boiler and process industries.

Key Features

- Reflex type provides clear level reading without auxiliary lighting
- Transparent type allows direct viewing of the liquid condition
- Suitable for boiler and process applications
- Resistant to high pressure and temperature
- Strong and safe construction for industrial service

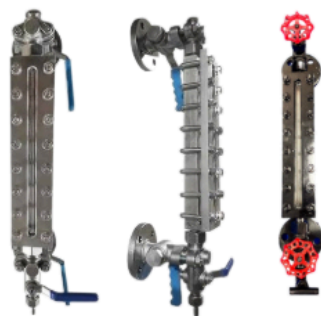


Weld Pad Sight Glass for Tanks

The Weld Pad Sight Glass is a tank-mounted liquid level indicator installed by welding directly onto the tank wall. This design provides strong structural integrity, tight sealing, and reduced risk of leakage. It is particularly suitable for high-pressure and high-temperature industrial applications.

Key Features

- Weld pad mounting for tight sealing and reduced leakage risk
- Strong construction for high pressure and high temperature service
- Clear and continuous direct visual indication
- Suitable for pressure tanks and industrial process systems
- Custom-made design available upon request



Weld Pad Reflex / Transparent Level Gauge with Gauge Cock

This Weld Pad Level Gauge with Gauge Cock is designed for direct liquid level indication in tanks. It is installed by welding directly to the tank and is equipped with top and bottom gauge cocks for shut-off control and improved safety. Available in both reflex and transparent types, it is suitable for industrial duties requiring strength, reliability, and secure operation.

Key Features

- Weld pad installation for strong and secure mounting
- Supplied with top and bottom gauge cocks for improved safety
- Available in Reflex and Transparent types to suit different applications
- Suitable for pressure tanks and industrial process service
- Custom-made design available upon request

“IWAKO” OIL LEVEL INDICATOR CATALOG



Brass Oil Level Indicator

The Brass Oil Level Indicator is used for direct visual monitoring of oil level in machinery and storage tanks. Made from high-quality brass, it offers good corrosion resistance and is well suited for lubrication and oil service in industrial applications.

Key Features

- Brass body with good corrosion resistance for oil and lubrication service
- Clear direct visual indication
- Compact construction and easy installation
- Suitable for gearboxes, tanks, and industrial machinery
- Available up to 2 meters in length
- Custom-made design available upon request



Stainless Steel Oil Level Indicator

The Stainless Steel Oil Level Indicator is designed for direct visual oil level monitoring in machinery or tanks. Manufactured from high-quality stainless steel, it provides excellent resistance to pressure, temperature, and corrosion. It is ideal for industrial applications requiring durability and reliability.

Key Features

- Stainless steel body for superior corrosion resistance and durability
- Clear direct visual indication
- Compact design and easy installation
- Suitable for high-temperature and high-pressure service
- Available up to 2 meters in length
- Custom-made design available upon request



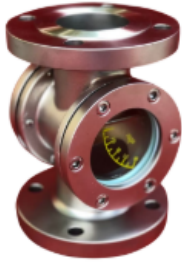
Aluminium Oil Level Indicator

The Aluminium Oil Level Indicator is designed for direct visual inspection of oil level in machinery. Its lightweight aluminium body offers good corrosion resistance and easy installation, making it suitable for compact industrial lubrication systems.

Key Features

- Lightweight aluminium body
- Clear direct visual oil level indication
- Easy installation and cost-effective design
- Compact construction and easy maintenance
- Suitable for gearboxes, general machinery, lubrication systems, air compressors, and small oil tanks

“IWAKO” SIGHT FLOW INDICATOR CATALOG



Sight Flow Indicator

The Sight Flow Indicator is designed for direct visual monitoring of liquid flow in pipeline systems. It allows operators to observe flow condition, color, and abnormalities in real time, providing greater confidence in system operation. It is suitable for industrial processes requiring reliable flow verification.

Key Features

- Direct visual flow indication in real time
- Helps monitor flow condition, liquid color, and abnormalities
- Strong construction for pressure and temperature service
- Available in various designs to suit different applications.

Sight Flow Indicator Specification

- Size: 1/2" - 12" (depending on model)
- Connection: Threaded / Flanged (ANSI / DIN / JIS)
- Body Material: Carbon Steel / Stainless Steel / PVC / Brass
- Window Material: Tempered Glass / Borosilicate Glass
- Pressure: up to approx. 10-25 bar (depending on model)
- Temperature: up to approx. 150-300°C (depending on material).

Sight Flow Indicator Applications

- Water / Wastewater Systems
- Chemical / Petrochemical Industries
- Cooling Systems
- Food & Beverage Industry
- General Industrial Piping Systems.

Sight Flow Indicator Type

- Inline Sight Flow Indicator
- Flanged Type / Threaded Type
- Full View / Double Window Type
- With Rotor / Flapper Type

“IWAKO” Sight Flow Indicator Catalogue

